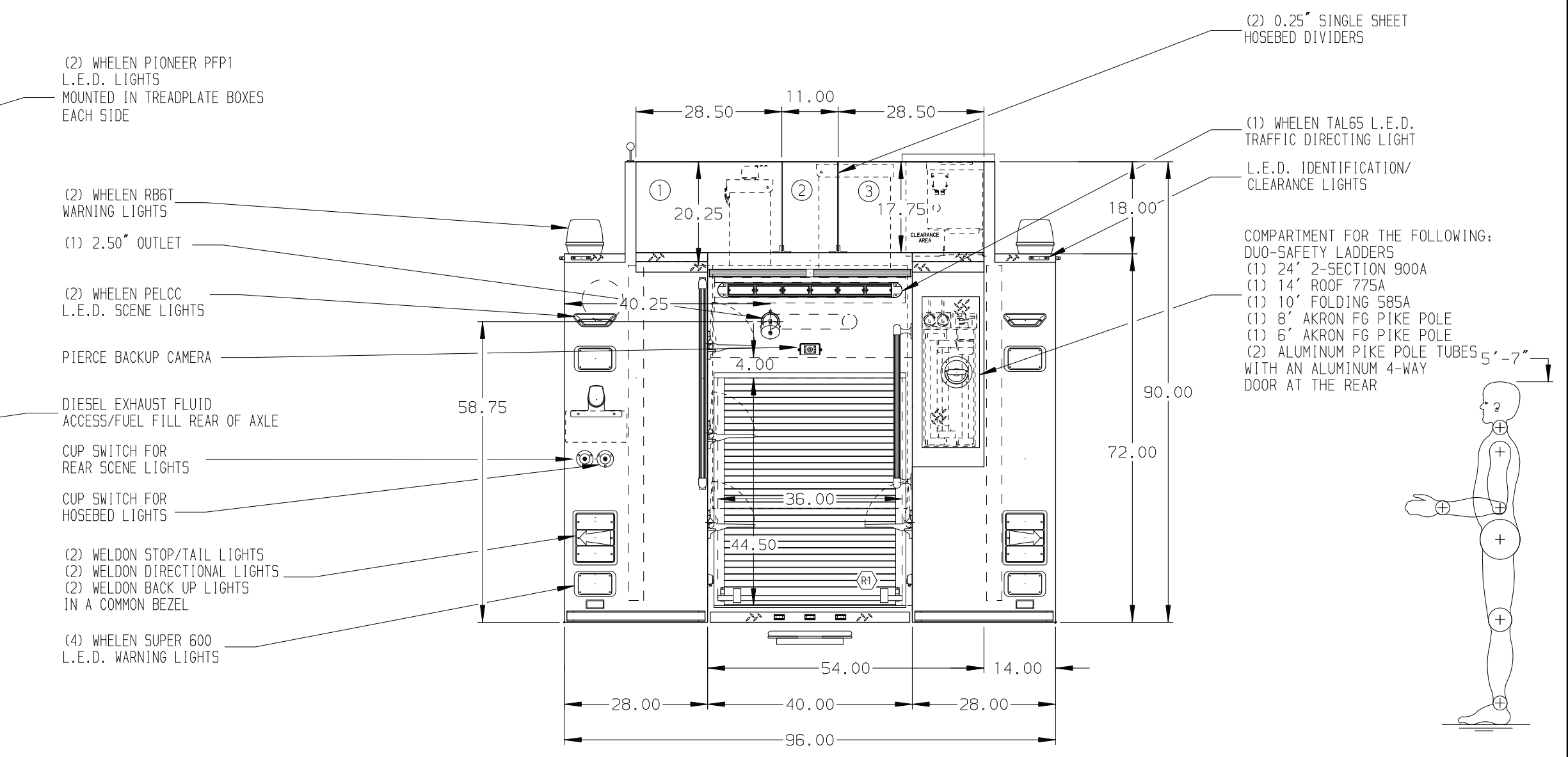
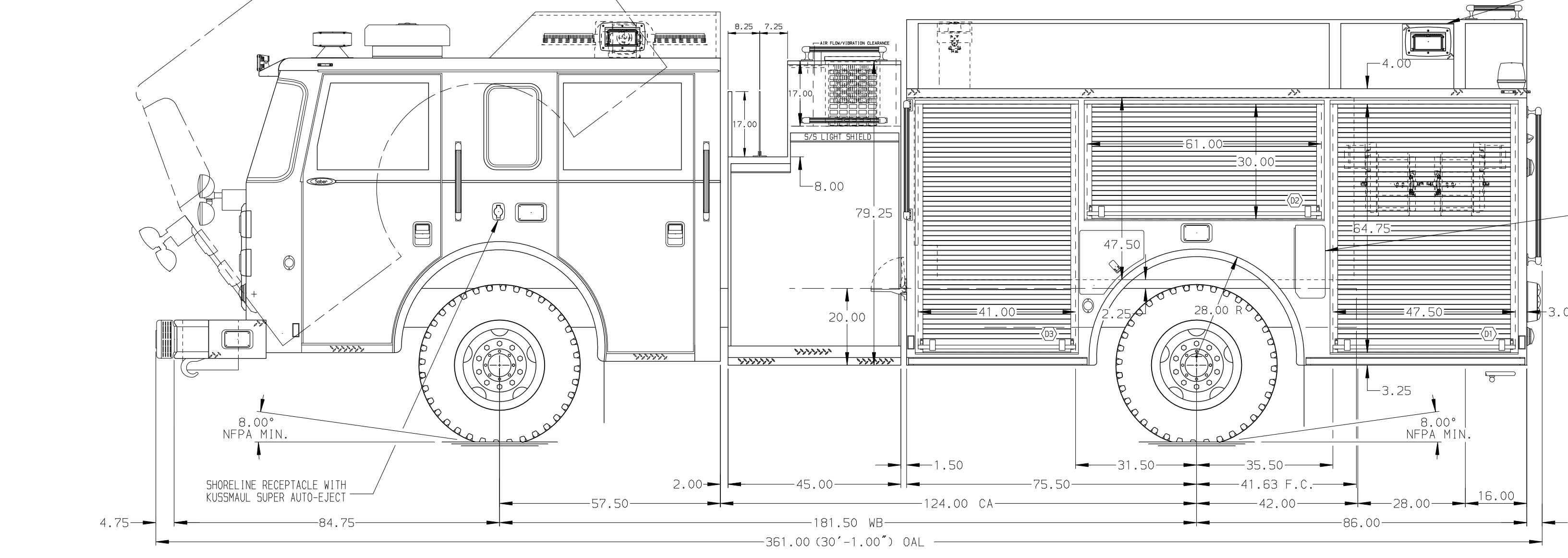


HOSEBED CAPACITIES

① 750' OF 2.50" D.J. HOSE

② 400' OF 1.50" D.J. HOSE

③ 750' OF 2.50" D.J. HOSE



ALUMINUM BODY

MAXIMUM O.A.H. 120.00"

NOTE
DIMENSIONS SHOWN ARE APPROXIMATE AND ARE SUBJECT TO MINOR DEVIATIONS AS MAY OCCUR OR BE NECESSARY IN CONSTRUCTION. MINOR DETAILS NOT SHOWN.

1. CTF WHEEL CHOCKS AND MOUNTING BRACKETS
2. ALUMINUM TREADPLATE EXTERIOR REAR WALL OF CAB
3. MOUNTING BASE FOR ANTENNA LOCATED PER SHOP ORDER
4. BATTERY CHARGER LOCATED BEHIND DRIVER SEAT
5. BATTERY CHARGE INDICATOR LOCATED ON D.S. SEAT RISER
6. PERIMETER SCENE LIGHTS LOCATED PER SHOP ORDER
7. ONE 12V L.E.D. LIGHT STRIP LOCATED ON EACH SIDE IN THE HOSEBED
8. ANOD L.E.D. COMPARTMENT LIGHT STRIPS LOCATED PER SHOP ORDER
9. SHELF TRACK LOCATED IN COMPARTMENTS D1, D2, D3, P1, P2, P3, R1
10. ONE FULL WIDTH/DEPTH PAINTED ADJUSTABLE SHELF IN COMPARTMENTS ???

11. ONE FLOOR MOUNTED SLIDE-OUT TRAY IN COMPARTMENT D1, P1, R1
12. SWING-OUT TOOL BOARD WITH PEGBOARD PATTERN IN COMPARTMENT P2
13. ALL FOLDING STEPS TO BE TRIDENT WITH INTEGRATED L.E.D. LIGHT UNLESS SPECIFIED
14. CIRCUIT BREAKER PANEL IN COMPARTMENT D3
15. TWO HANNAY MODEL 2016-17-18 HYDRAULIC REELS LOCATED IN COMPARTMENT D1 WITH A CAPACITY FOR 100' OF 0.25" DUAL HOSE
16. ONE 120V RECEPTACLE ON PUMP PANEL EACH SIDE
17. AIR INLET WITH DISCONNECT COUPLING IN D.S. STEP WELL

REV	DATE	BY	CH	CHASSIS DATA
25FEB15	RWI	JAF	PIERCE	MAKE
15JAN15	RWI	JAF	MODEL	SABER

		JOB NO.	28427
		SCALE	DATE
TITLE	1500-D-720P W/30G FOAM, 161", FULL HEIGHT & DEPTH D.S. FDLER P.S., (2) X-LAYS, DELUGE, GENERATOR, REELS	DRAWN BY	JWO
FOR	KALAMAZOO TOWNSHIP KALAMAZOO, MICHIGAN	CHECKED BY	MNE
DWG NO.	28427AD	SHEET SIZE	SHEET NO.
		D	1 OF 1