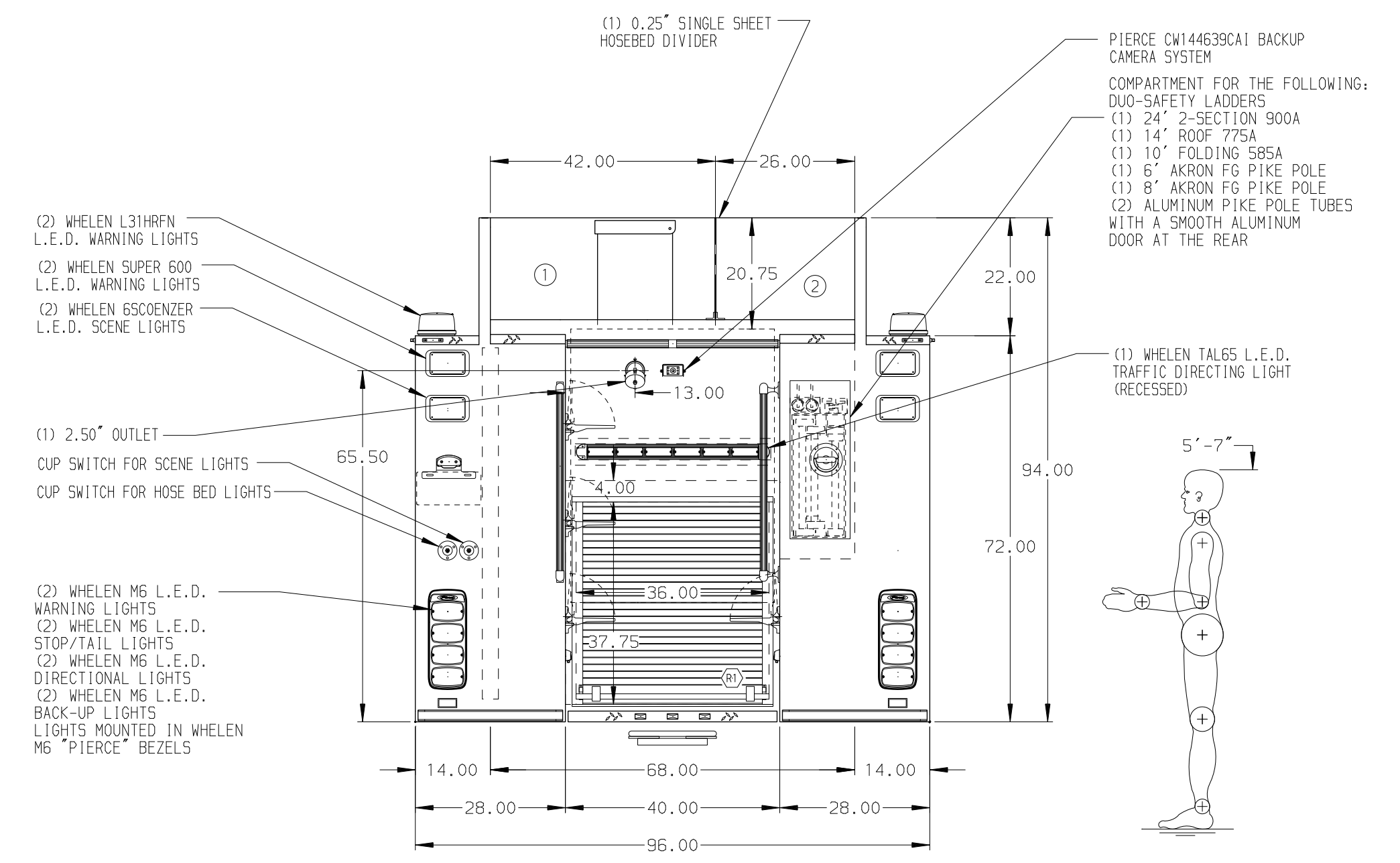


HOSEBED CAPACITIES

① 1000' OF 5.00" D.J. POLY HOSE

② 1000' OF 3.00" D.J. POLY HOSE



ALUMINUM BODY

NOTE
DIMENSIONS SHOWN ARE APPROXIMATE AND ARE SUBJECT TO MINOR DEVIATIONS AS MAY OCCUR OR BE NECESSARY IN CONSTRUCTION. MINOR DETAILS NOT SHOWN.

		JOB NO.	29607
		SCALE	DATE
CHASSIS DATA TITLE MAKE MODEL SABER FR	FOR DWG NO.	1500-D-750 POLY, 152" BODY, FH&D DS, FH FDLER PS LADDERS NEXT TO TANK, DELUGE, GENERATOR, (2) XLYS	1:24
		KALAMAZOO TOWNSHIP KALAMAZOO, MICHIGAN	DRAWN BY TES CHECKED BY KBO SHEET SIZE D
REV DATE BY CH	05FEB16 21DEC15 29OCT15	JLA JLA TES	RW1 RW1 KBO
DATE BY CH		DATE DATE DATE	130CT15 120CT15 SHEET NO. 1 OF 1

29607AD