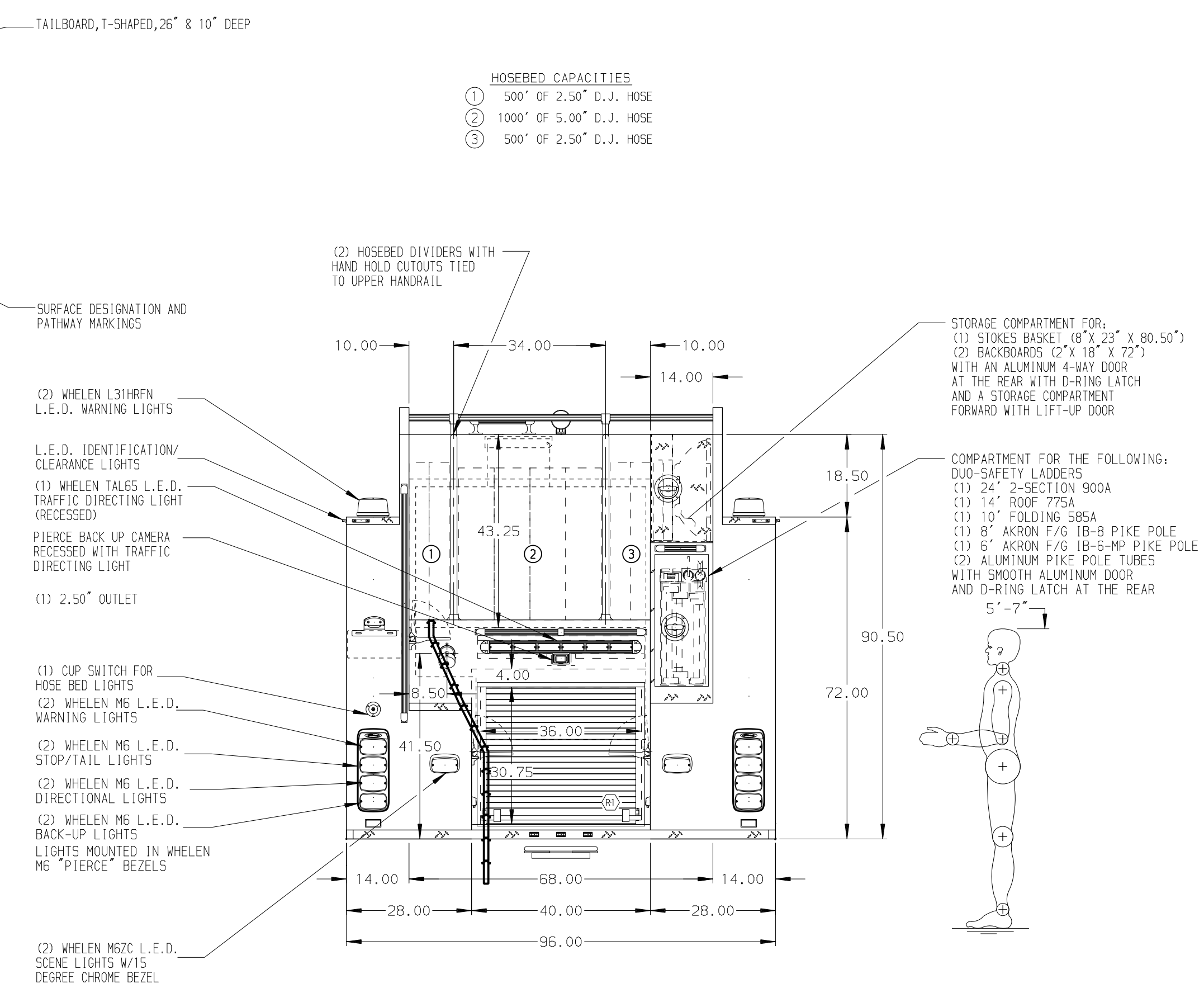
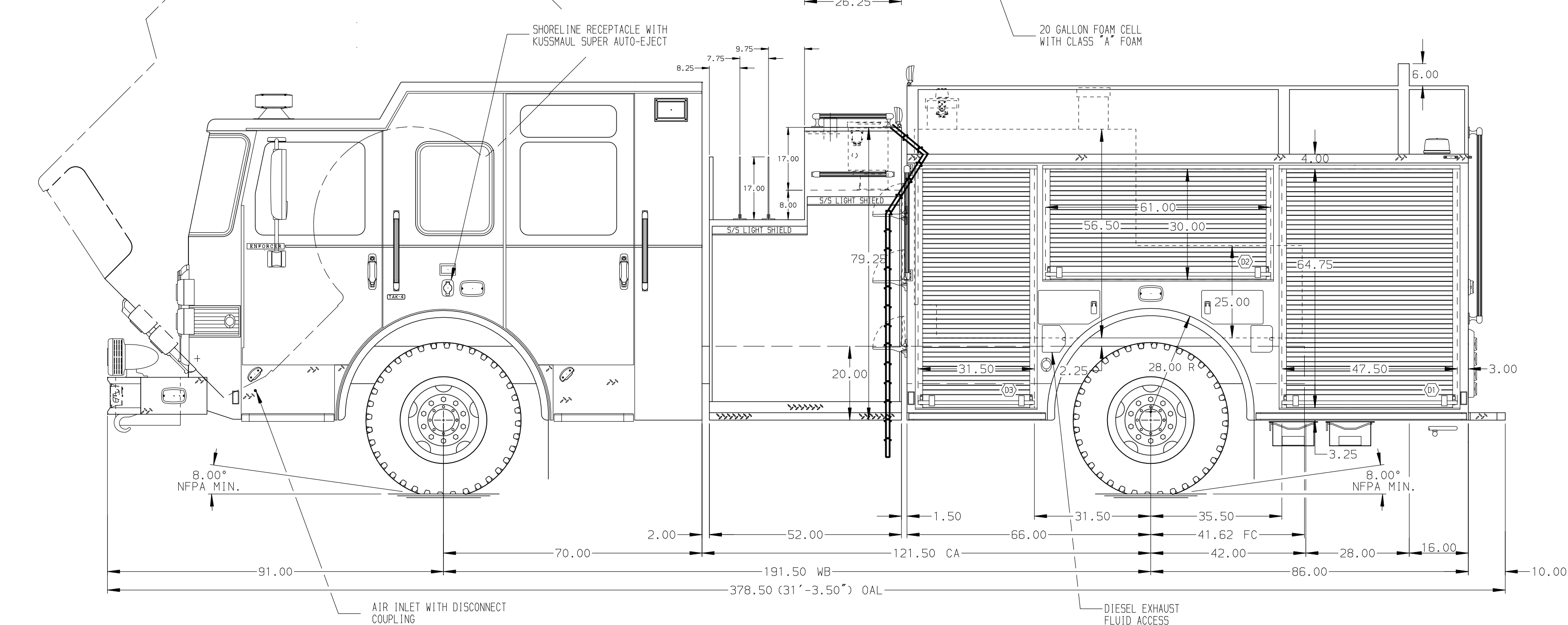


HOSEBED CAPACITIES

①	500' OF 2.50\"/>
②	1000' OF 5.00\"/>
③	500' OF 2.50\"/>



ALUMINUM BODY

NOTE
DIMENSIONS SHOWN ARE APPROXIMATE AND ARE SUBJECT TO MINOR DEVIATIONS AS MAY OCCUR OR BE NECESSARY IN CONSTRUCTION. MINOR DETAILS NOT SHOWN.

- ALUMINUM TREADPLATE EXTERIOR REAR WALL OF CAB
- MOUNTING BASE FOR ANTENNA LOCATED PER SHOP ORDER
- BATTERY CHARGER LOCATED BEHIND DRIVER SEAT
- PERIMETER SCENE LIGHTS LOCATED PER SHOP ORDER
- FOUR WHELEN 01-066068-00 12V L.E.D. LIGHTS LOCATED IN THE HOSE BED
- 5/STL PROTECTIVE GUARD FOR ALL ROLL-UP DOORS
- ANDOR L.E.D. COMPARTMENT DUAL LIGHT STRIPS LOCATED PER SHOP ORDER
- PAINTED SHELF TRACKS LOCATED IN COMPARTMENTS D1, D2, D3, P1, P2 & P3
- ONE FULL WIDTH/DEPTH PAINTED ADJUSTABLE SHELF IN COMPARTMENT D1, D2, D3, P1, P2 & P3
- ONE ADJUSTABLE SLIDE-OUT TRAY IN COMPARTMENT D1, D3, P1 & P3
- PIERCE LOGO MUDFLAPS FRONT AND REAR
- STAINLESS STEEL FENDER CROWNS FRONT AND REAR
- ANDOR LUMBAR H20 AY-3500-040 40.00\"/>

CHASSIS DATA	TITLE	1500-D-750P W/20 GAL FOAM CELL, 152\"/>	
MAKE	FOR	PIERCE FIELD UNIT APPLETON, WISCONSIN	
PIERCE	DWG NO.	30410AD	
MODEL	ENFORCER		
REV	DATE	BY	CH

		JOB NO.	30410
		SCALE	DATE
	TITLE	1500-D-750P W/20 GAL FOAM CELL, 152\"/>	
	FOR	PIERCE FIELD UNIT APPLETON, WISCONSIN	
DWG NO.	30410AD	CHECKED BY	THS
REV	DATE	BY	CH
		SHEET SIZE	SHEET NO.
		D	1 OF 1