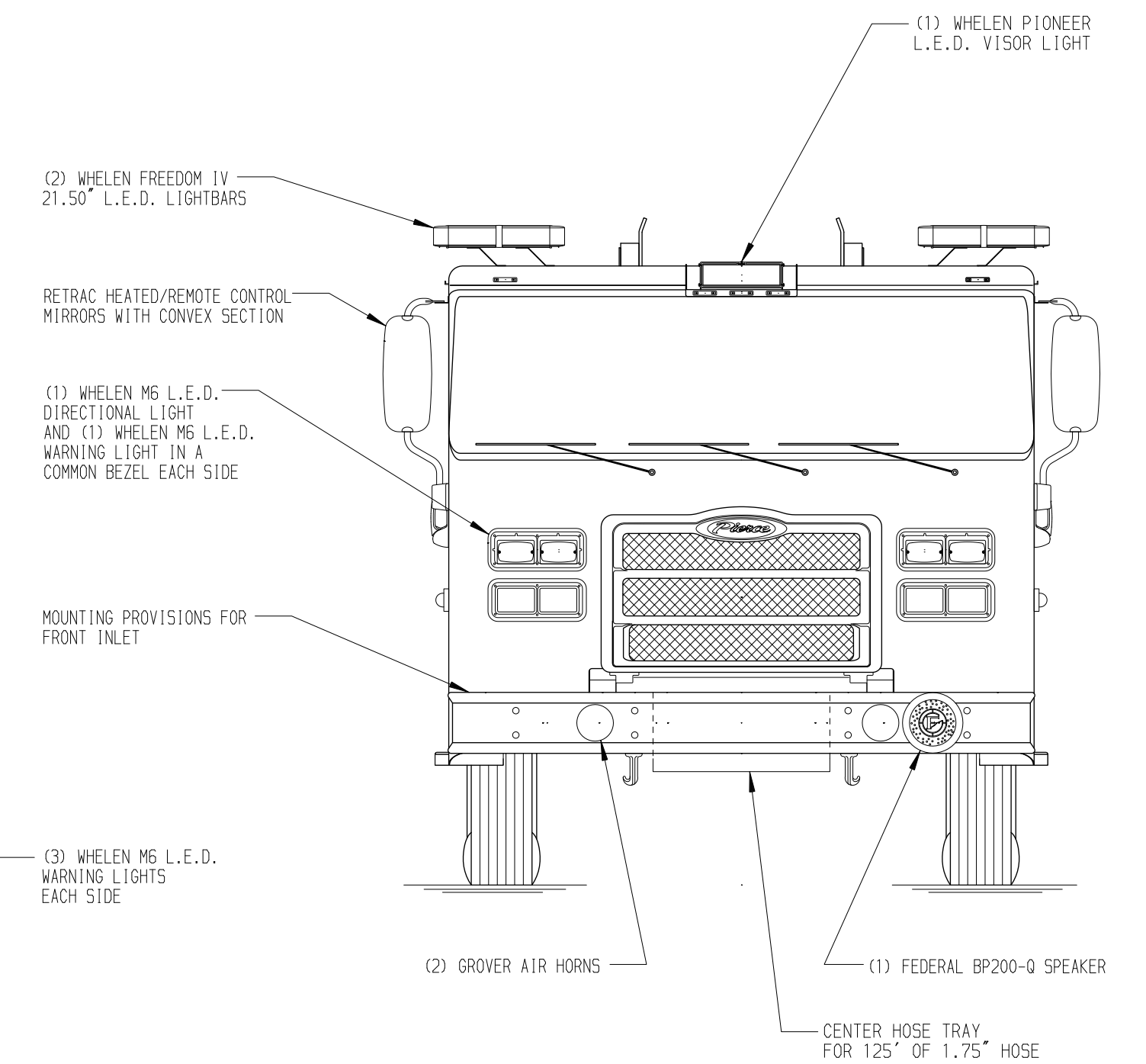
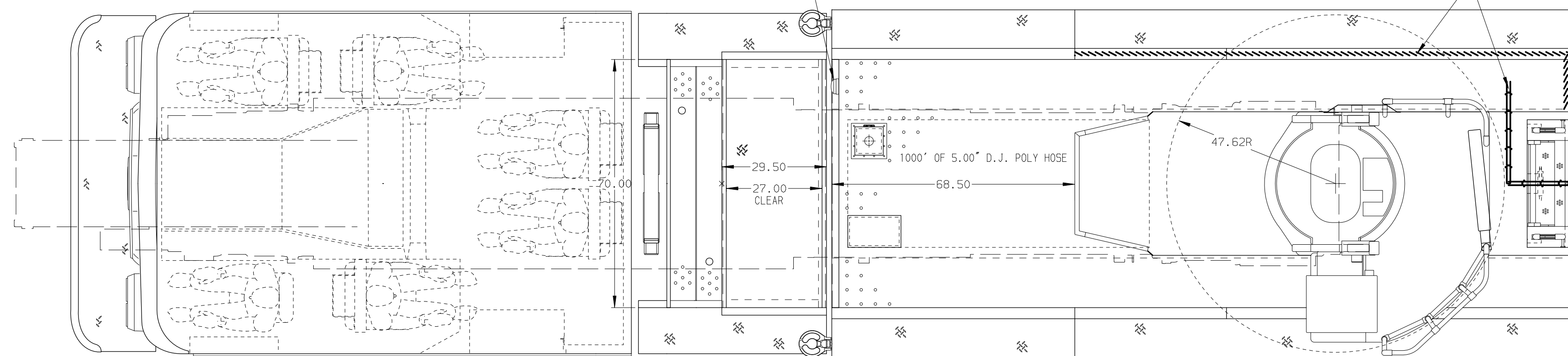


(3) SPECIAL DOUBLE AIR BOTTLE COMPARTMENTS 14.00' W x 7.50' H x 26.00' D

(1) FRP L.E.D. FLOODLIGHT FOR DESIGNATED WALKWAY

SURFACE DESIGNATION AND PATHWAY MARKINGS



(2) WHELEN FREEDOM IV 21.50\"/>

RETRACT HEATED/REMOTE CONTROL MIRRORS WITH CONVEX SECTION

(1) WHELEN M6 L.E.D. DIRECTIONAL LIGHT AND (1) WHELEN M6 L.E.D. WARNING LIGHT IN A COMMON BEZEL EACH SIDE

MOUNTING PROVISIONS FOR FRONT INLET

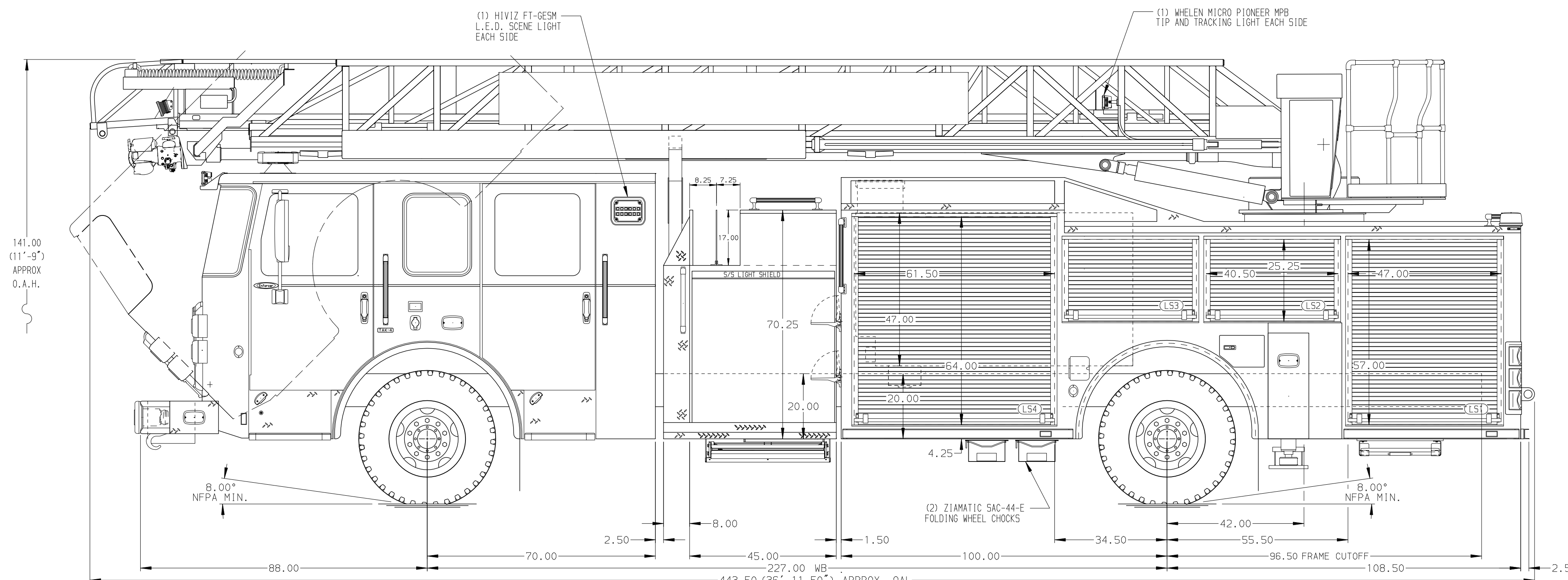
(3) WHELEN M6 L.E.D. WARNING LIGHTS EACH SIDE

(2) GROVER AIR HORNS

(1) FEDERAL BP200-0 SPEAKER

CENTER HOSE TRAY FOR 125\"/>

BODY	WATER TANK
75' HAL Aluminum Body	500 Gallon Poly Water Tank
COMPT, LEFT SIDE FRONT	Foam System
Full Height RollUp Forward	Plumbing for Future Husky Foam System
COMPT, LEFT SIDE REAR	Foam Cell
Full Height RollUp Rearward	20 Gallon Foam Cell, Non-Reduced Water
COMPT, RIGHT SIDE FRONT	
Full Height RollUp Forward	
COMPT, RIGHT SIDE REAR	
Full Height RollUp Rearward	



(1) H1VIZ FT-GESM L.E.D. SCENE LIGHT EACH SIDE

(1) WHELEN MICRO PIONEER MP8 TIP AND TRACKING LIGHT EACH SIDE

141.00 (11\"/>

8.00\"/>

(2) ZIAMATIC SAC-44-E FOLDING WHEEL CHOCKS

8.00\"/>

(2) WHELEN L31HRFN L.E.D. WARNING LIGHTS

(2) WHELEN MPR15 RECESSED SCENE LIGHTS

LONG ITEM STORAGE ONE 24\"/>

PIERCE BACK UP CAMERA

SWITCH FOR REAR SCENE LIGHTS

(2) WRAP AROUND L.E.D. LIGHT SETS WITH STOP/TAIL, BACK UP AND DIRECTIONAL LIGHTS IN A COMMON BEZEL

(2) WHELEN M6 L.E.D. WARNING LIGHTS

LONG ITEM STORAGE ONE 35\"/>

SWITCH FOR HOSE BED LIGHTS

80.25

72.25

65.25

5\"/>

98.00

(2) WHELEN M6 L.E.D. WARNING LIGHTS

5.00\"/>

ACCESS TO STABILIZER MANUAL OVERRIDE

ELECTRIC STABILIZER CONTROLS WITH SMOOTH ALUMINUM DOOR EACH SIDE

CHASSIS	CAB	AXLE, FRONT, CUSTOM	TRANSMISSION	PUMPHOUSE	CROSSLAYS, 1.50"	SPEEDLAYS	CUSTOMER APPROVAL	Pierce MANUFACTURING INC.		JOB NO.
Enforcer Chassis	7000 Enforcer Cab	19,500 Lb TAK-4 Axle	Allison 5th Gen, 3000 EVS P	45\"/>	(2) 1.50\"/>	Speedlays Not Required	APPROVED BY: _____	Pierce MANUFACTURING INC.		35888
ENGINE	BUMPER	AXLE, REAR		PUMP	CROSSLAYS, 2.50"	GENERATOR	DATE: _____			SCALE
450 HP Cummins L9 Engine	19\"/>	33,500 Lb Meritor Axle		1500 GPM Waterous CSU	2.50\"/>	Generator Not Required				1:24
NOTE								TITLE		DATE
DIMENSIONS SHOWN ARE APPROXIMATE AND ARE SUBJECT TO MINOR DEVIATIONS AS MAY OCCUR OR BE NECESSARY IN CONSTRUCTION. MINOR DETAILS NOT SHOWN.								75 AERIAL LADDER & BODY ASSEMBLY (HAL)		21DEC20
1. ONE 1.50 OUTLET WITH 2.00 PIPING AND SWIVEL LOCATED IN CENTER BUMPER TRAY								FOR		CHECKED BY
2. SHORELINE RECEPTACLE WITH KUSSMAUL SUPER-AUTO-EJECT LOCATED ON DRIVER SIDE OF THE CAB								PIERCE FIELD UNIT		THS
3. AIR INLET WITH DISCONNECT COUPLING IN THE DRIVER SIDE STEPWELL								APPLETON, WI		22DEC20
4. BATTERY CHARGE INDICATOR LOCATED BEHIND DRIVER SEAT								DWG		SHEET SIZE
5. BATTERY CHARGE INDICATOR LOCATED ON DRIVER SIDE OF THE CAB								NO.		SHEET NO.
6. DUAL L.E.D. LIGHT STRIPS LOCATED IN HOSE BED								35888AD		D
7. FOUR ADJUSTABLE SHELVES IN COMPARTMENTS PER SHOP ORDER										1 OF 1
8. FOUR FLOOR MOUNTED SLIDE-OUT TRAYS LOCATED IN COMPARTMENTS PER SHOP ORDER										
9. 7.00\"/>										