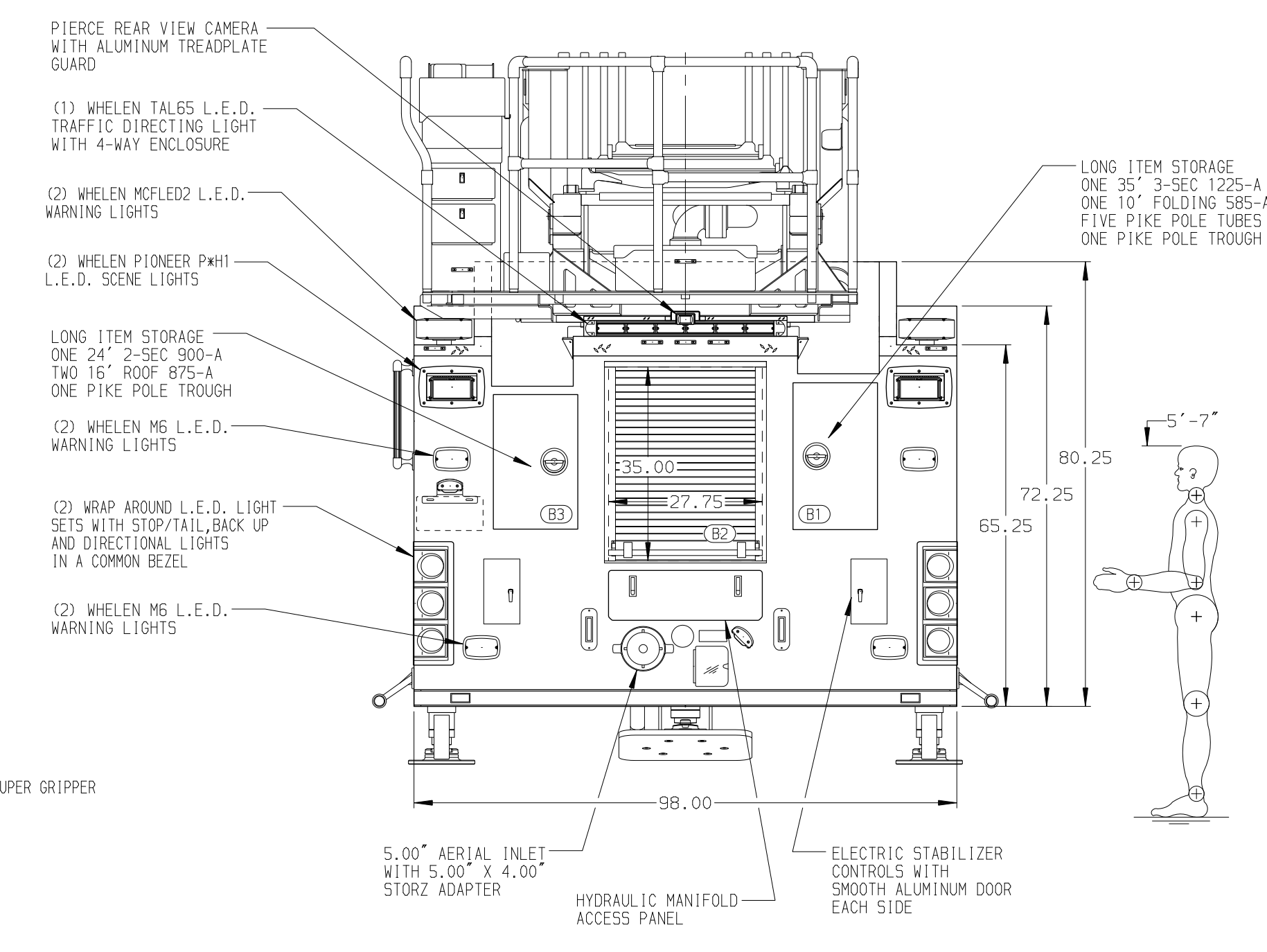
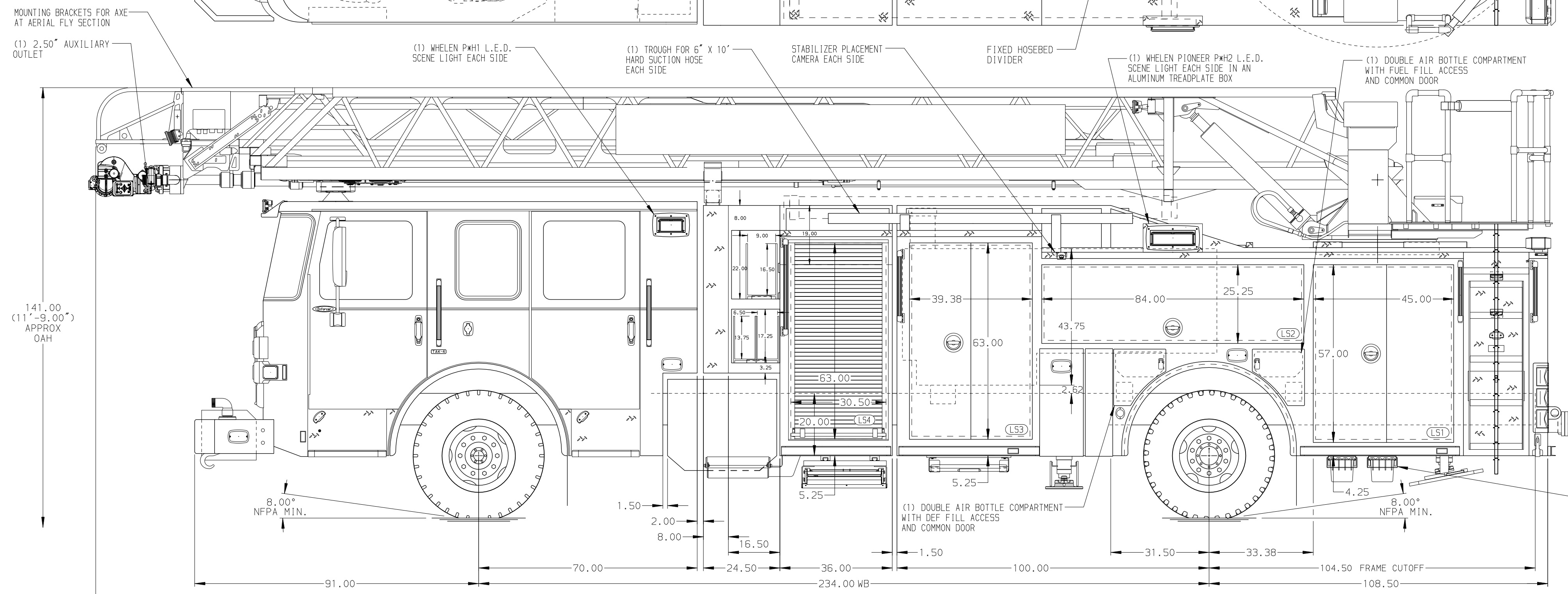
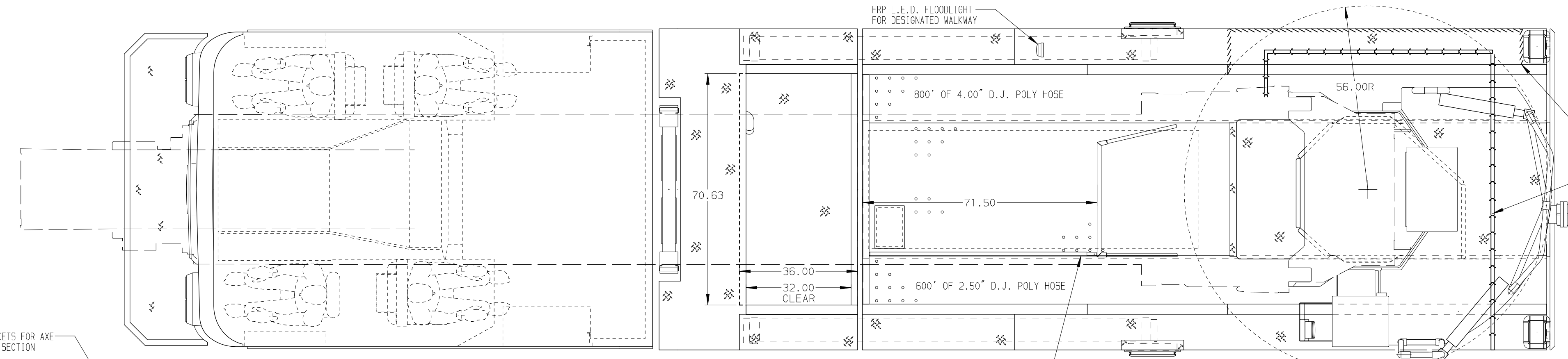


<p>BODY 107' ASL Aluminum Body PUC COMPT, LEFT SIDE FRONT Full Height Lap Forward COMPT, LEFT SIDE REAR Full Height Lap Rearward COMPT, RIGHT SIDE FRONT Full Height Lap Forward COMPT, RIGHT SIDE REAR Full Height Lap Rearward</p>	<p>WATER TANK 500 Gal/Lon Poly Water Tank Foam System Foam System Not Required Foam Cell Foam Cell Not Required</p>
---	--



CHASSIS Enforcer Chassis, PUC 450 HP Cummins L9 Engine	CAB 7000 Enforcer Cab, PUC 22' Extended Painted Steel	AXLE, FRONT, CUSTOM 22,800 Lb TAK-4 Axle AXLE, REAR 33,500 Lb Meritor Axle	TRANSMISSION Allison 5th Gen, 3000 EV5 P	PUMPHOUSE Control Zone, PAL/PAP PUC PUMP 1500 GPM Pierce PUC	CROSSLAYS, 1.50" (2) 1.50", Poly Trays, 200' CROSSLAYS, 2.50" (1) 2.50", Poly Tray, 200'	SPEEDLAYS GENERATOR Generator Not Required
---	--	---	--	--	---	--

<p>NOTE DIMENSIONS SHOWN ARE APPROXIMATE AND ARE SUBJECT TO MINOR DEVIATIONS AS MAY OCCUR OR BE NECESSARY IN CONSTRUCTION. MINOR DETAILS NOT SHOWN.</p>	<p>1. SHORELINE RECEPTACLE WITH KUSSMAUL SUPER AUTO-EJECT LOCATED ON THE DRIVER SIDE OF THE CAB 2. AIR INLET WITH DISCONNECT COUPLING LOCATED IN THE DRIVER SIDE STEPWELL 3. BATTERY CHARGER LOCATED IN COMPARTMENT PER SHOP ORDER 4. BATTERY CHARGER INDICATOR LOCATED ON DRIVER'S SEAT RISER 5. DUAL L.E.D. LIGHT STRIPS LOCATED IN HOSE BED 6. SEVEN ADJUSTABLE FULL WIDTH/FULL DEPTH SHELVES IN COMPARTMENTS PER SHOP ORDER 7. ONE FLOOR MOUNTED SLIDE-OUT TRAY IN COMPARTMENT PER SHOP ORDER 8. ONE SWING-OUT ALUMINUM TOOL BOARD IN COMPARTMENT PER SHOP ORDER 9. ONE ADJUSTABLE TOOLBOARD MOUNTED TO SLIDE-OUT TRAY IN COMPARTMENT PER SHOP ORDER</p>	<p>10. FOUR AIR BOTTLE HOLDERS WITH TRACKS IN COMPARTMENT PER SHOP ORDER 11. ONE 120V IN COMPARTMENT PER SHOP ORDER 12. WIRELESS CAMERA LOCATED AT AERIAL EGRESS 13. LIFTING EYE ROPE RESCUE ATTACHMENT AT AERIAL TIP 14. NON-RAISED AERIAL PEDESTAL 15. 1500 GPM HIGH FLOW WATERWAY 16. WIRELESS MONITOR REMOTE CONTROL NEAR THE PUMP PANEL 17. LIMITED RETRACTION NOT REQUIRED</p>
--	--	--

		JOB NO.	36196
		SCALE	1:24
<p>107' ASCENDANT AERIAL LADDER AND BODY ASSEMBLY</p>		TITLE	107' ASCENDANT AERIAL LADDER AND BODY ASSEMBLY
		FOR	PENTWATER FIRE DEPARTMENT PENTWATER, MICHIGAN
<p>CHASSIS DATA MAKE PIERCE MODEL ENFORCER</p>		DWG NO.	36196AD
		CHECKED BY	NDA
<p>REV 27AUG21 TKA KBO 25JUN21 TKA KBO</p>		SHEET SIZE	D
		SHEET NO.	1 OF 1